



# RESILIENCY BRIDGE

## HOUSING AS A PLATFORM FOR ECONOMIC MOBILITY

In Central Ohio, some workers feel stuck in low-paying jobs with no room for professional advancement. To get a higher paying and more rewarding career, workers need certifications in high-demand fields like healthcare, technology, and project management. But many families are already juggling work, kids, and other responsibilities... adding school to that overflowing plate feels impossible.

Resiliency Bridge understands these challenges and is here to help. Workers that are motivated to start a new career and invest in their future can receive all the support needed to make that leap a successful one. Resiliency Bridge offers Franklin County residents no-cost education in upwardly mobile fields, affordable housing while they study for their new career, and supports to make their transition easier like childcare and transportation.



### WORKFORCE CREDENTIALS

Participants complete job training programs that result in stable, higher-paying careers



### HOUSING STABILITY

Families receive safe, affordable housing to increase education access and support career goals



### WRAP-AROUND SUPPORTS

Workers are connected to a resource network that includes childcare, broadband, & other supports

If you were referred to the Resiliency Bridge program, information on your next steps is included in this information packet. You can learn more about the program at [www.AHACO.org/Resiliency](http://www.AHACO.org/Resiliency).

Resiliency Bridge offers a small cohort each year and can assist approximately one hundred students in 2023-2024. We welcome new partners & funding to expand even further. To help, contact AHACO at [admin@ahaco.org](mailto:admin@ahaco.org).

# RESILIENCY BRIDGE

## Participant Details & Next Steps



### Resiliency Bridge Eligibility.

The program is designed for workers that live in Franklin County and who currently receive public benefits like unemployment, food assistance, Medicaid, housing/rent assistance, or Temporary Aid to Needy Families. Workers usually need a high school degree or equivalency. The entire household that the worker lives in must earn 60% of the Area Median Income or less (see the gray box below).

### Documents You Need to Have Ready

Be prepared to provide proof of your birth date (like a driver's license or birth certificate), proof you're authorized to work in the U.S. (like a social security card, passport, or Right to Work form), proof of selective service registration for males, unemployment or layoff letter (if applicable), and proof of current income (like pay stubs, tax returns, or benefit statements). As part of our program evaluation, you may be asked to sign a consent form to share information with research partners that will be used to improve the program for future classes.

Household Size	60% of Area Median Income**
1 Person	\$41,700
2 Person	\$47,640
3 Person	\$53,580
4 Person	\$59,520
5 Person	\$64,320
6 Person	\$69,060

\*\*Income requirements subject to change based on program rules; talk to your navigator for more information.

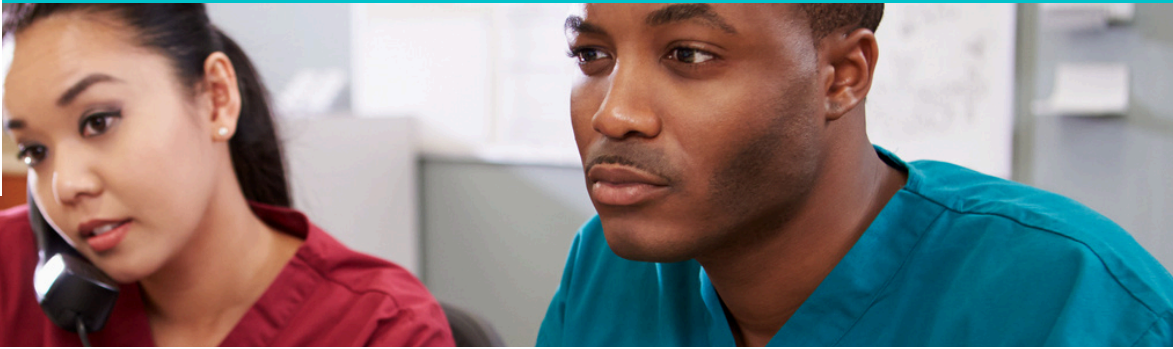
### More on the Resiliency Bridge Support System

Each Resiliency Bridge participant is paired with a Navigator to help identify the supports needed to successfully complete the education program and start their new career. These supports are customized to each family's unique needs. A sample of some of those services is provided below.

- **Rental Assistance.** To make sure workers can focus on their education and keep their families safely housed during this transition, all Resiliency Bridge participants will receive help paying their rent during the program. Your Navigator will help you create a custom budget and housing plan.
- **Utility Assistance.** Our partners are available to help Resiliency Bridge participants remove barriers and enroll in utility assistance programs like PIPP or HEAP that will lower their housing costs.
- **Financial Coaching.** Participants can be connected to financial professionals to create a budget, address debt issues, and even get started on the path to homeownership.
- **Internet Access.** A computer and internet connection is increasingly necessary to thrive in this job market; Resiliency Bridge participants have access to devices and broadband to complete their education and succeed in the workforce.

# RESILIENCY BRIDGE

## Participant Details & Next Steps



- **Transportation Assistance.** Transportation barriers shouldn't stop someone from getting an education or a well-paying job; our partners are able to help with emergency car repairs, gasoline costs, and bus passes.
- **Food Assistance.** Workers can't study if they're hungry or worried about the household getting enough to eat; our partners make sure that every family has access to fresh, healthy food.
- **Family Supports & Life Coaching.** A career change affects the whole family. Participants can access life coaching and family counseling supports to ensure that these most important relationships are nurtured.
- **Professional Assistance.** Participants have access to a wide network of professional supports to help update resumes, practice interviewing skills, and find an employer that meets their goals.
- **Other Tools:** Your Navigator is here to help you clear any hurdles to your new dream job, including connecting you to tools to seal a criminal record or get legal assistance.

### Resiliency Bridge Workforce Training & Referral Partners

To enroll in Resiliency Bridge, students must be approved to participate in a qualifying career certification program. These official Resiliency Bridge partners offer no-cost career training:

#### Ohio Means Jobs of Columbus & Franklin County

[www.omjcfc.org](http://www.omjcfc.org)

#### Women at Work Career Accelerator Program

[www.wdbco.org/women-at-work-cap](http://www.wdbco.org/women-at-work-cap)

#### New Directions Career Center

[www.newdirectionscc.org](http://www.newdirectionscc.org)

#### Columbus State Community College

[www.csccl.edu/workforce](http://www.csccl.edu/workforce)

#### Goodwill Columbus

[www.goodwillcolumbus.org](http://www.goodwillcolumbus.org)

#### IMPACT Community Action

[www.impactca.org](http://www.impactca.org)

#### Jewish Family Services

<https://jfscolumbus.org>

Resiliency Bridge will consider new referral partners upon request, provided that training is offered at no cost to the student. To be considered "no cost", the student may receive funding through the WIOA, AMP, PELL grants, and/or other grants that do not require repayment or student loans.



# RESILIENCY BRIDGE

## More on the Enrollment Process



**Step 1:** Student applies to a Workforce Training & Referral Partner to identify their career goals and enroll in a no-cost credential program.

Current Workforce Training & Referral Partners are listed on page 3 of this packet.

**Step 2:** The Workforce Training & Referral Partner submits a referral to Resiliency Bridge that includes the student's basic eligibility information.

A student enrollment checklist is provided on page 9 of this packet.

**Step 3:** Home for Families reviews the referral, confirms Resiliency Bridge eligibility, and pairs the student with a one-on-one Navigator.

A description of the student's full support network is provided below.

**Step 4:** The student and their Navigator collaborate to create a personalized plan that connects the entire household with housing and wrap-around supports.

Examples of wrap-around supports are listed on page 2 of this packet.

**Step 5:** The student completes their training program, usually in 3 - 9 months, working closely with their Navigator during the process.

Pre-approved training programs begin on page 5 of this packet.

**Step 6:** The student graduates from their training program and receives additional support while securing a job and entering their new profession.

A space for notes, questions, and ideas is included on page 10 of this package.

## MEET YOUR SUPPORT NETWORK

### Workforce Training Provider

[VARIES BY STUDENT]

Helps you find a rewarding and well-paying career, gets you enrolled in the education program, and connects you to employers and jobs after graduation.

### Resiliency Bridge Navigator

HOME FOR FAMILIES

Helps you secure the supports needed to get your education, like rent assistance, childcare, and transportation. They are a trusted ally throughout your experience.

### Optional: Life or Employment Coach

COLUMBUSWORKS

Provides individual, one-on-one coaching to help you navigate through this big life change to attain greater personal fulfillment and professional success.

### Optional: Family Counseling and Coaching

ACTION FOR CHILDREN

A major career change has impacts for the entire family, Action for Children can help you navigate these changes and protect your most cherished relationships.

# RESILIENCY BRIDGE

## Career Certification Details



### Career Training Programs

Participants can select an education pathway in a high-demand career that pays at least \$22.37 per hour immediately upon completion. Certifications that are pre-approved are listed below, students and Workforce Training & Referral Partners are encouraged to contact Resiliency Bridge to review and add new training programs. Programs listed as "Not OMJCFC approved" require an alternate financial aid plan.

#### Heavy & Tractor-Trailer Truck Drivers | Driving & Logistics Industry

**Sample Jobs:** Driver, Over the Road Driver, Road Driver, Truck Driver, Tow Truck Driver

**Median Wage for all Workers:** \$49,820

**Participating Schools:** Roadmaster, 160 Driving Academy, Capital Transportation, Fleet Parking Columbus CDL Academy, Ohio Business College Trucking Academy

**Description:** Drive a tractor-trailer combination or a truck with a capacity of at least 26,001 pounds Gross Vehicle Weight. May be required to unload truck. Requires commercial drivers' license.

#### HVAC-R Technician | Construction Industry

**Sample Jobs:** HVAC Installer, HVAC Mechanic, Refrigeration Mechanic, Service Technician, Systems Mechanic

**Median Wage for all Workers:** \$50,570

**Participating Schools:** Career and Technology Education Centers of Licking County, Columbus City Schools

**Description:** Install or repair heating, central air conditioning, HVAC, or refrigeration systems, including oil burners, hot-air furnaces, and heating stoves.

#### Utility Lineman | Construction Industry

**Sample Jobs:** Electrical Lineman, Electrical Lineworker, Lineworker, Power Lineman, Power Lineman Technician

**Median Wage for all Workers:** \$83,830

**Participating Schools:** Career and Technology Education Centers of Licking County (C-TEC)

**Description:** Install or repair cables or wires used in electrical power or distribution systems. May erect poles and light or heavy duty transmission towers.

#### Construction Manager | Construction Industry

**Sample Jobs:** Concrete Foreman, Construction Area Manager, Construction Foreman, Construction Manager, Construction Services Manager, Construction Superintendent, Job Superintendent.

**Median Wage for all Workers:** \$101,480

**Participating Schools:** Columbus State Community College (**Not OMJCFC approved**)

**Description:** Plan, direct, or coordinate, usually through subordinate supervisory personnel, activities concerned with the construction and maintenance of structures, facilities, and systems. Participate in the conceptual development of a construction project and oversee its organization, scheduling, budgeting, and implementation.

#### Pipe Welding | Engineering, Manufacturing & Engineering Technology Industry

**Sample Jobs:** Fabrication Welder, Maintenance Welder, Solderer, Welder, Welder Fitter

**Median Wage for all Workers:** \$46,360

**Participating Schools:** Career and Technology Education Centers of Licking County (C-TEC)

**Description:** Use hand-welding, flame-cutting, hand-soldering, or brazing equipment to weld or join metal components or to fill holes, indentations, or seams of fabricated metal products.



### **Architectural CAD Drafting Certificate** | Engineering, Manufacturing & Engineering Technology Industry

**Sample Jobs:** Architect, Design Architect, Planner, Project Architect, Specifications Writer

**Median Wage for all Workers:** \$82,840

**Participating Schools:** Columbus State Community College (**Not OMJCFC approved**)

**Description:** Plan and design structures, such as private residences, office buildings, theaters, factories, and other structural property.

### **Surgical Technologists** | Healthcare Industry

**Sample Jobs:** Certified Surgical Technician, Certified Surgical Technologist (CST), Operating Room Surgical Technician (OR St), Operating Room Technician (OR Tech), Surgical Technician

**Median Wage for all Workers:** \$48,250

**Participating Schools:** Columbus State Community College (**Not OMJCFC approved**)

**Description:** Assist in operations, under the supervision of surgeons, registered nurses, or other surgical personnel. May help set up operating room, prepare and transport patients for surgery, adjust lights and equipment, pass instruments and other supplies to surgeons and surgeons' assistants, hold retractors, cut sutures, and help count sponges, needles, supplies, and instruments.

### **Medical Records Specialists** | Healthcare Industry

**Sample Jobs:** Coder, Health Information Clerk, Health Information Specialist, Health Information Technician, Medical Records Clerk, Medical Records Coordinator, Medical Records Technician

**Median Wage for all Workers:** \$47,180

**Participating Schools:** Larock Healthcare Academy - Columbus, Career and Technology Education Centers of Licking County (C-TEC), Goodwill Columbus

**Description:** Compile, process, and maintain medical records of hospital and clinic patients in a manner consistent with medical, administrative, ethical, legal, and regulatory requirements of the healthcare system. Classify medical and healthcare concepts, including diagnosis, procedures, medical services, and equipment, into the healthcare industry's numerical coding system. Includes medical coders.

### **Dental Hygienists** | Healthcare Industry

**Sample Jobs:** Dental Hygienist, Hygienist, Licensed Dental Hygienist, Pediatric Dental Hygienist, Registered Dental Hygienist (RDH)

**Median Wage for all Workers:** \$62,350

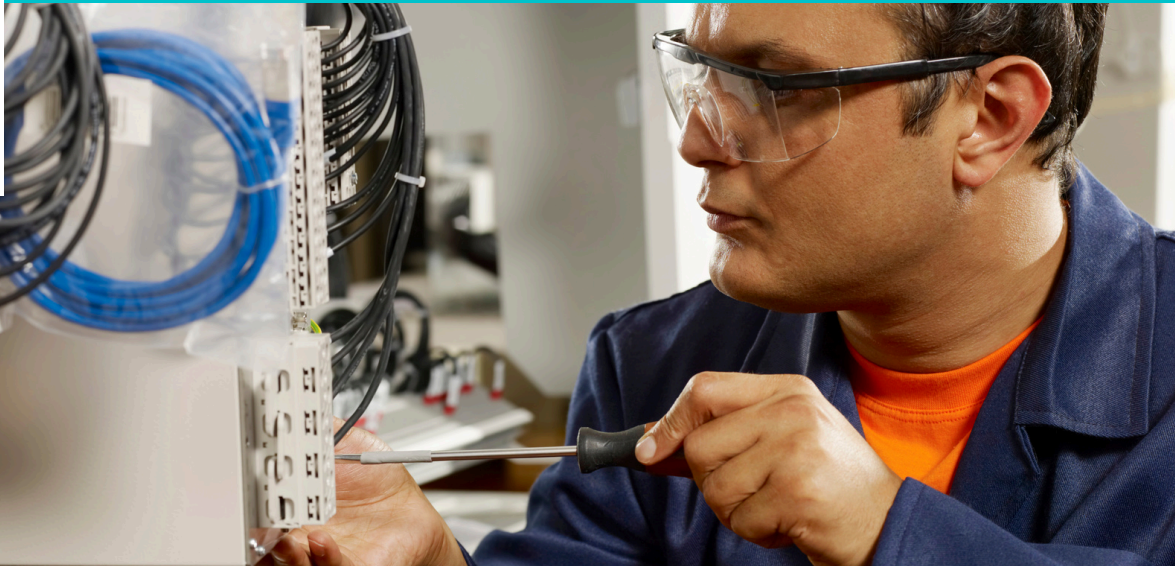
**Participating Schools:** Columbus State (**Not OMJCFC approved**)

**Description:** Administer oral hygiene care to patients. Assess patient oral hygiene problems or needs and maintain health records. Advise patients on oral health maintenance and disease prevention. May provide advanced care such as providing fluoride treatment or administering topical anesthesia.



# RESILIENCY BRIDGE

## Career Certification Details



### **Licensed Practical Nurse** | Healthcare Industry

**Sample Jobs:** Clinic Nurse, Home Health LPN, Office Nurse, Pediatric LPN, Radiation Oncology Nurse, Triage LPN

**Median Wage for all Workers:** \$50,590

**Participating Schools:** Academia Medical Institute, Columbus City Schools

**Description:** Care for ill, injured, or convalescing patients or persons with disabilities in hospitals, nursing homes, clinics, private homes, group homes, and similar institutions. May work under the supervision of a registered nurse. Licensing required.

### **Substance Abuse and Behavioral Disorder Counselors** | Healthcare Industry

**Sample Jobs:** Addictions Counselor, Case Manager, Certified Alcohol and Drug Counselor (ADAC), Chemical Dependency Counselor (CD Counselor), Chemical Dependency Professional, Clinical Counselor, Counselor, Drug and Alcohol Treatment Specialist (DATS), Prevention Specialist, Substance Abuse Counselor (SA Counselor)

**Median Wage for all Workers:** \$49,710

**Participating Schools:** Columbus State (**Not OMJCFC approved**)

**Description:** Counsel and advise individuals with alcohol, tobacco, drug, or other problems, such as gambling and eating disorders. May counsel individuals, families, or groups or engage in prevention programs.

### **Full Stack Certification/Web and Digital Interface Designer** | Information Technology Industry

**Sample Jobs:** Technology Apps Engineer, Web Architect, Web Design Specialist, Web Designer, Webmaster

**Median Wage for all Workers:** \$79,390

**Participating Schools:** NCUS TEC, Career Matrix

**Description:** Develop and implement websites, web applications, application databases, and interactive web interfaces. Evaluate code to ensure that it is properly structured, meets industry standards, and is compatible with browsers and devices. Optimize website performance, scalability, and server-side code and processes. May develop website infrastructure and integrate websites with other computer applications.

### **CompTIA Security+** | Information Technology Industry

**Sample Jobs:** Information Security Officer, IT Security Analyst, Network Security Analyst, Security Analyst

**Median Wage for all Workers:** \$103,470

**Participating Schools:** Global Lynx, MyComputerCareer at Columbus, My Career IT LLC, QS Academy, Inc, ONLC Training Centers, Career and Technology Education Centers of Licking County (C-TEC), SnapIT Solutions LLC, Coding Dojo

**Description:** Plan, implement, upgrade, or monitor security measures for the protection of computer networks and information. Assess system vulnerabilities for security risks and propose and implement risk mitigation strategies. May ensure appropriate security controls are in place that will safeguard digital files and vital electronic infrastructure. May respond to computer security breaches and viruses.



### Cyber Security | Information Technology Industry

**Sample Jobs:** Digital Forensics Analysts

**Median Wage for all Workers:** \$99,360

**Participating Schools:** MyComputerCareer at Columbus, Career and Technology Education Centers of Licking County (C-TEC), My Career IT LLC, MyComputerCareer at Columbus, SnapIT Solutions LLC, We Can Code IT, Bronzeville IT Academy LLC, QS Academy, Inc, Goodwill Columbus, Advanced Technology Education, Coding Dojo

**Description:** Conduct investigations on computer-based crimes establishing documentary or physical evidence, such as digital media and logs associated with cyber intrusion incidents. Analyze digital evidence and investigate computer security incidents to derive information in support of system and network vulnerability mitigation. Preserve and present computer-related evidence in support of criminal, fraud, counterintelligence, or law enforcement investigations.

### Information Security Analyst | Information Technology Industry

**Sample Jobs:** Information Security Officer, Information Security Specialist, Information Systems Security Analyst, Network Security Analyst, Security Analyst, Systems Analyst

**Median Wage for all Workers:** \$103,470

**Participating Schools:** Global Lynx

**Description:** Plan, implement, upgrade, or monitor security measures for the protection of computer networks and information. Assess system vulnerabilities for security risks and propose and implement risk mitigation strategies. May ensure appropriate security controls are in place that will safeguard digital files and vital electronic infrastructure. May respond to computer security breaches and viruses.

### Computer Systems Analyst | Information Technology Industry

**Sample Jobs:** Applications Analyst, Business Systems Analyst, Computer Analyst, Computer Systems Analyst, Information Systems Analyst, IT Analyst (Information Technology Analyst), Programmer Analyst, Systems Analyst

**Median Wage for all Workers:** \$100,960

**Participating Schools:** Global Lynx

**Description:** Analyze science, engineering, business, and other data processing problems to develop and implement solutions to complex applications problems, system administration issues, or network concerns. Perform systems management and integration functions, improve existing computer systems, and review computer system capabilities, workflow, and schedule limitations. May analyze or recommend commercially available software.

### Accountants and Auditors | Information Technology Industry

**Sample Jobs:** Accountant, Accounting Officer, Audit Partner, Auditor, Certified Public Accountant (CPA), Cost Accountant, Financial Auditor, General Accountant

**Median Wage for all Workers:** \$49,170

**Participating Schools:** Ohio State University-Main Campus, Franklin University (**not OMJCFC approved**)

**Description:** Examine, analyze, and interpret accounting records to prepare financial statements, give advice, or audit and evaluate statements prepared by others. Install or advise on systems of recording costs or other financial and budgetary data.





### **Forensic Science Technicians** | Criminal Justice Industry

**Sample Jobs:** Crime Lab Analyst (Crime Laboratory Analyst), Crime Scene Analyst (CSA), Crime Scene Technician (Crime Scene Tech), CSI (Crime Scene Investigator), Forensic Scientist, Forensic Specialist

**Median Wage for all Workers:** \$63,620

**Participating Schools:** Ohio University (**not OMJCFC approved**)

**Description:** Collect, identify, classify, and analyze physical evidence related to criminal investigations. Perform tests on weapons or substances, such as fiber, hair, and tissue to determine significance to investigation. May testify as expert witnesses on evidence or crime laboratory techniques. May serve as specialists in area of expertise, such as ballistics, fingerprinting, handwriting, or biochemistry.

### **Geographic Information Systems Technologists and Technicians** | Information Technology Industry

**Sample Jobs:** Geographic Information System Analyst (GIS Analyst), Geographic Information Systems Administrator (GIS Administrator), Geographic Information Systems Analyst (GIS Analyst), Geographic Information Systems Coordinator (GIS Coordinator), GIS Specialist (Geographic Information Systems Specialist), GIS Technician (Geographic Information Systems Technician), Resource Analyst

**Median Wage for all Workers:** \$98,740

**Participating Schools:** Columbus State Community College (**Not OMJCFC approved**)

**Description:** Assist scientists or related professionals in building, maintaining, modifying, or using geographic information systems (GIS) databases. May also perform some custom application development or provide user support.

**Is your desired career path not on the pre-approved training list?  
Ask your Workforce Training Partner to contact Resiliency Bridge  
to evaluate whether it can be added.**

# RESILIENCY BRIDGE

## Checklist for Interested Participants



### Documents showing total household income

Pay stubs, benefit letters, tax returns, IRS Form W-2. Six months income docs required.



### Documents showing age and birthdate

Valid driver's license, state/federal ID, passport card, or birth certificate



### Documents showing authorization to work

Social security card, birth certificate, citizenship/alien status, Right to Work form, U.S. passport, passport card, hospital record, naturalization certificate



### Selective Service registration (males born after 1/1/60)

(for males born after January 1, 1960) Selective Service Card, internet verification



### Verification of Dislocation (if applicable)

Unemployment Compensation Award Letter, lay-off letter, severance letter, RESEA letter

Resiliency Bridge enrolls a small number of students each year. To make these resources available to more families, we are conducting a program evaluation. You may be asked to share information about yourself and your experiences during the program and after graduation.

Resiliency Bridge was created by a diverse team of professionals and community members, including Action for Children, the Affordable Housing Alliance of Central Ohio, Columbus Metropolitan Housing Authority, Columbus State Community College, ColumbusWorks, Community Shelter Board, the Columbus Partnership, Habitat for Humanity Mid-Ohio, Home for Families, Homeport, Impact Community Action, Mid-Ohio Food Collective & ReadySkill, and the Workforce Development Board of Central Ohio. **Resiliency Bridge is possible because of the support of our funders: the Franklin County Board of Commissioners, the Columbus Metropolitan Housing Authority, the JPMorgan Chase Foundation, and the Columbus Foundation.**

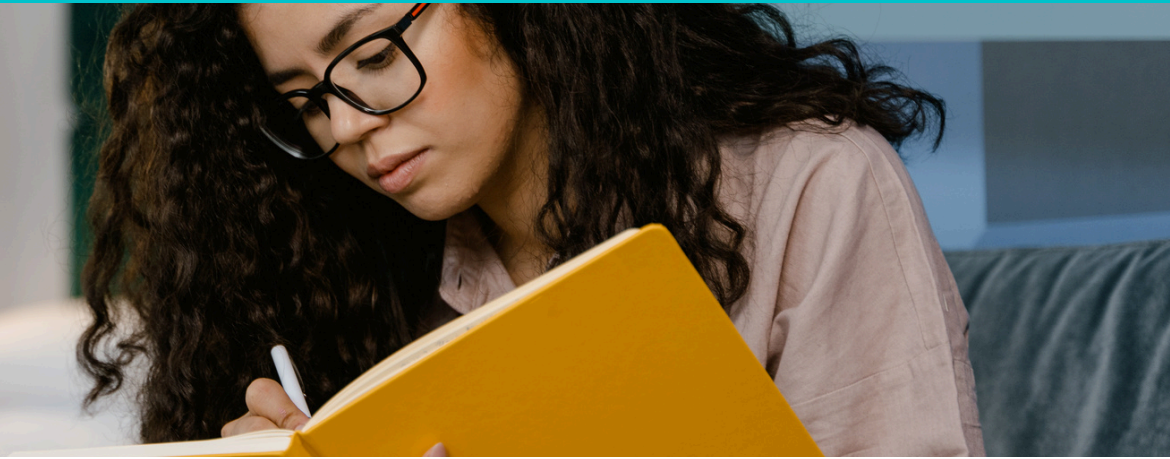
## Contacts

Home for Families  
[www.homeforfamilies.org](http://www.homeforfamilies.org)  
614.461.9247

Ohio Means Jobs  
[www.omjfc.org](http://www.omjfc.org)  
614.559.5052

# RESILIENCY BRIDGE

Space for  
Notes & Ideas



## Questions I Need Answered

---

---

---

---

---

---

---

---

---

---

## Things I Must Do

---

---

---

---

---

---

---

---

---

---

### Self Check-In

What am I feeling in  
this moment?

What support could I  
use right now?

What are my "dripping  
faucet" thoughts?

## Other Ideas I Don't Want to Forget

---

---

---

---

---

---

---

---

---

---





Columbus-Franklin County

A proud partner of the American Job Center network



## FUNDING PARTNERS



THE COLUMBUS FOUNDATION



Franklin County

BOARD OF COMMISSIONERS



COLUMBUS METROPOLITAN HOUSING AUTHORITY



Sick of bad pay, lousy hours, and not being able to make ends meet?

**Resiliency Bridge is here to help!**